



B

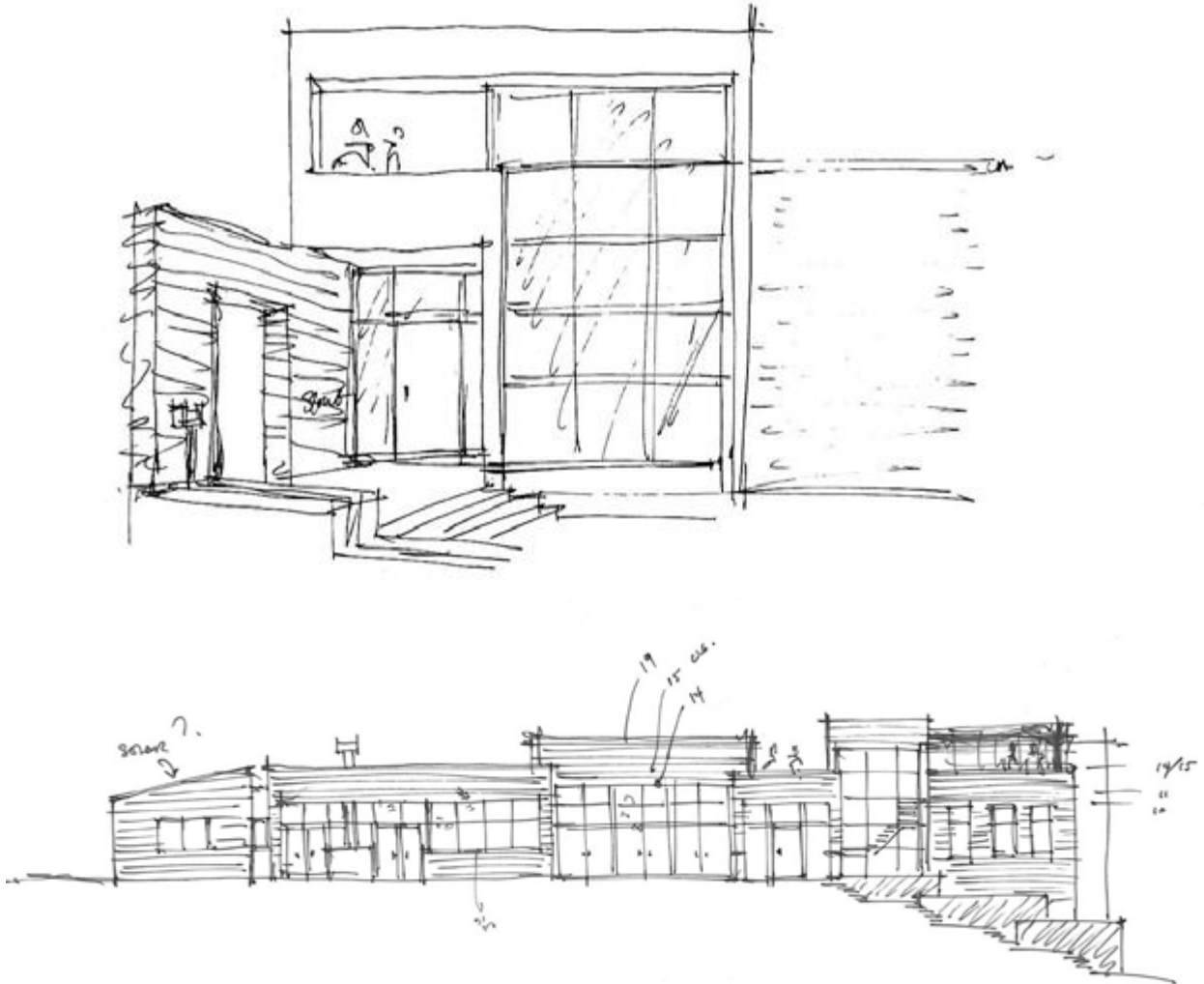
FREEDOM TO CREATE



CHEN PROJECT

MAY 2016
BROMBAL MAG #02

PROJECT DESCRIPTION



This "Rolling Hills" estate is situated to follow the form of the hillside brow. The building forms are organized in an "L" shape at the crest of the hill to create an expansive yard and maximize use of the site.

The result is a modern sculptural composition in the rural landscape. The home consists of a 12,000 sf. main and 1,200 sf. guest house.

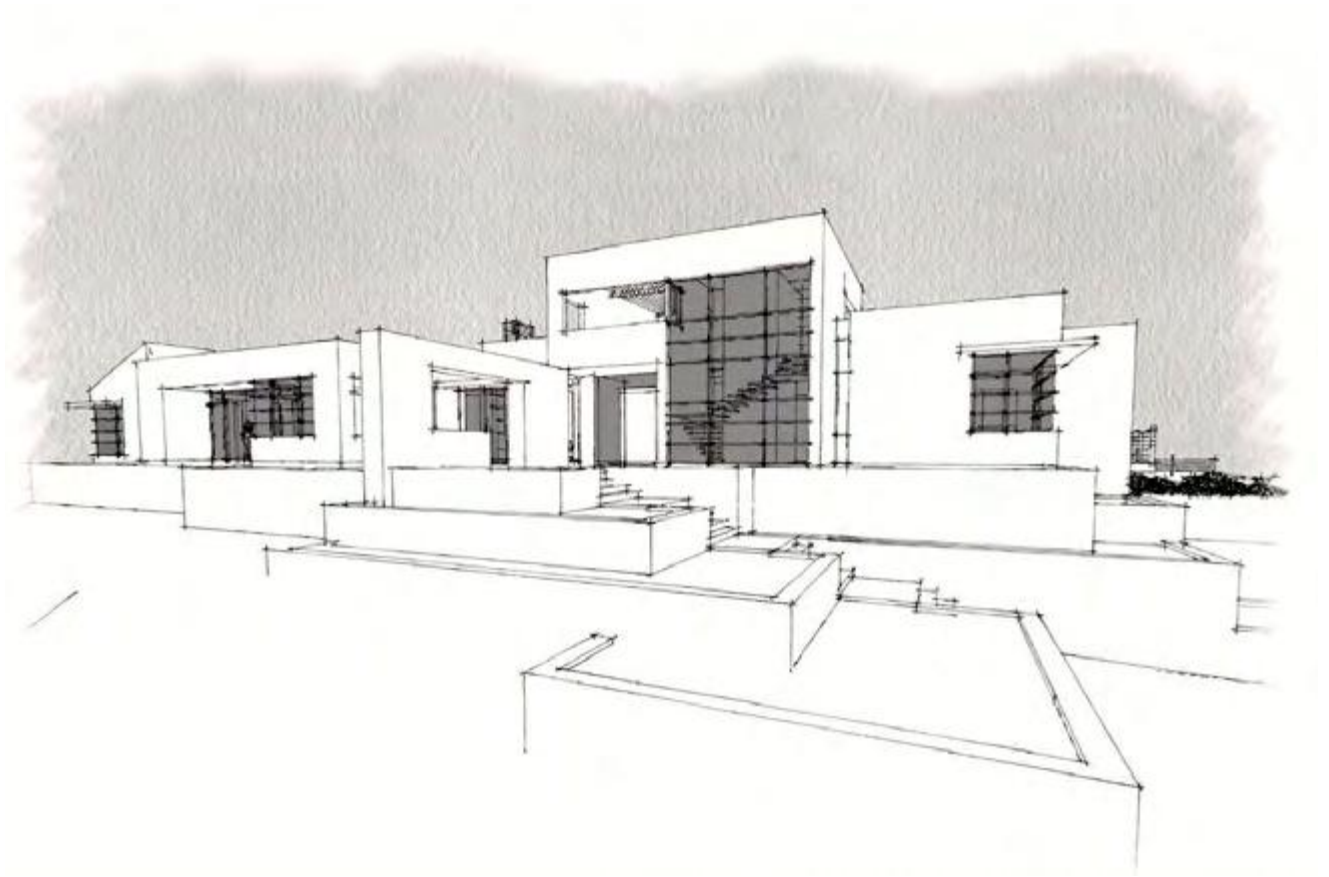
The contemporary home integrates high-end design with a commitment to green building. Passive ventilation techniques are incorporated to reduce energy use. The exterior cladding utilizes a ventilated "rainscreen" facade technology, allowing the skin to breathe and naturally reducing heating and cooling loads.

Live "green" roofs provide additional insulation and reduce heat island effect.

The building forms incorporate sloped rooflines to conceal solar panels and varying flat roof planes to create rooftop living spaces to take advantage of great view opportunities.

The interior brings together European and Asian influences with California casual living styles. Fold-away glass doors and large windows extend living spaces to the outdoors. An 85' infinity edge pool and outdoor terraces highlight extraordinary panoramic views over Silicon Valley.

LOUIE LEU ARCHITECT Inc.





CHEN - SARATOGA VILLA

When it came to searching for a fenestration system Louie Leu Architect Inc., had an interesting dilemma on their hands. They wanted contemporary narrow sight-lines but few restrictions on size, configurations, and operability. To throw an added level of complexity the homeowner requested white oak wood interiors. Their research found them at the door of Cooritalia who is a longtime partner of Brombal USA. When each request was presented Brombal kept true to their motto: "Freedom to Create" providing an appropriate solution to each request.



Large corner units without obstruction were provided to open the glazing walls allowing views to filter through without restraint. This was achieved using a butt glaze process with clear structural silicone.



Glazed curtain walls are usually found in commercial building applications but due to their simple and narrow common mullion (50mm) detail they are being used much more often in residential design. The front façade is framed perfectly with the Brombal Termica curtain wall system that is 13'-10 x 18'-0. To the interior side vast amounts of natural light pour into the stairwell and entrance.

One element is 18'-6 x 10'-0 and consists of motorized awnings, tilt/turn operator, and a single 12'-0 x 10'-0 picture window. It's a very complicated configuration but for Brombal it's just what we do.



“FREEDOM TO CREATE”



METAL/WOOD BI - FOLD

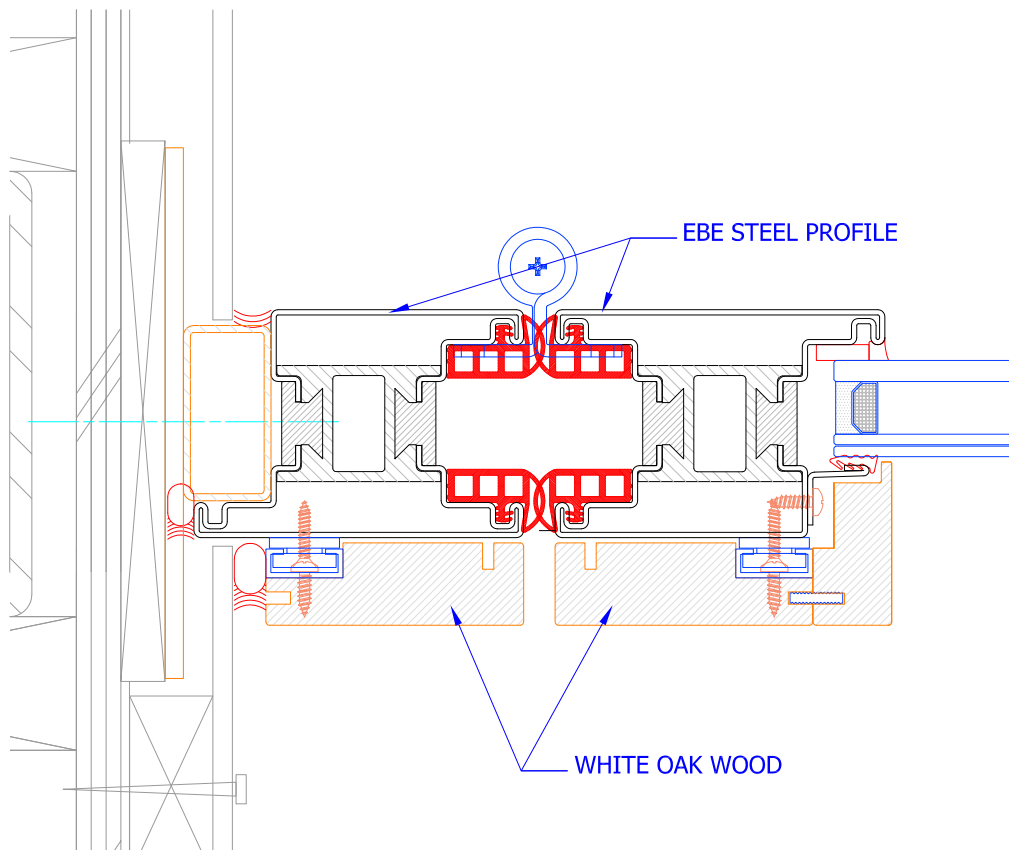
Steel represents strength, durability, and longevity. Used in fenestration it is a perfect substrate for the Chen residence because the design demanded large expanses of glass, open corner assemblies and large operable doors. The added benefit offered by Brombal was the ability to soften the interior with white oak wood accents. This was achieved by utilizing a concealed key and slot connection so the interior has a remarkable furniture finish without any blemish from exposed fasteners.

It's Italian design at its best!

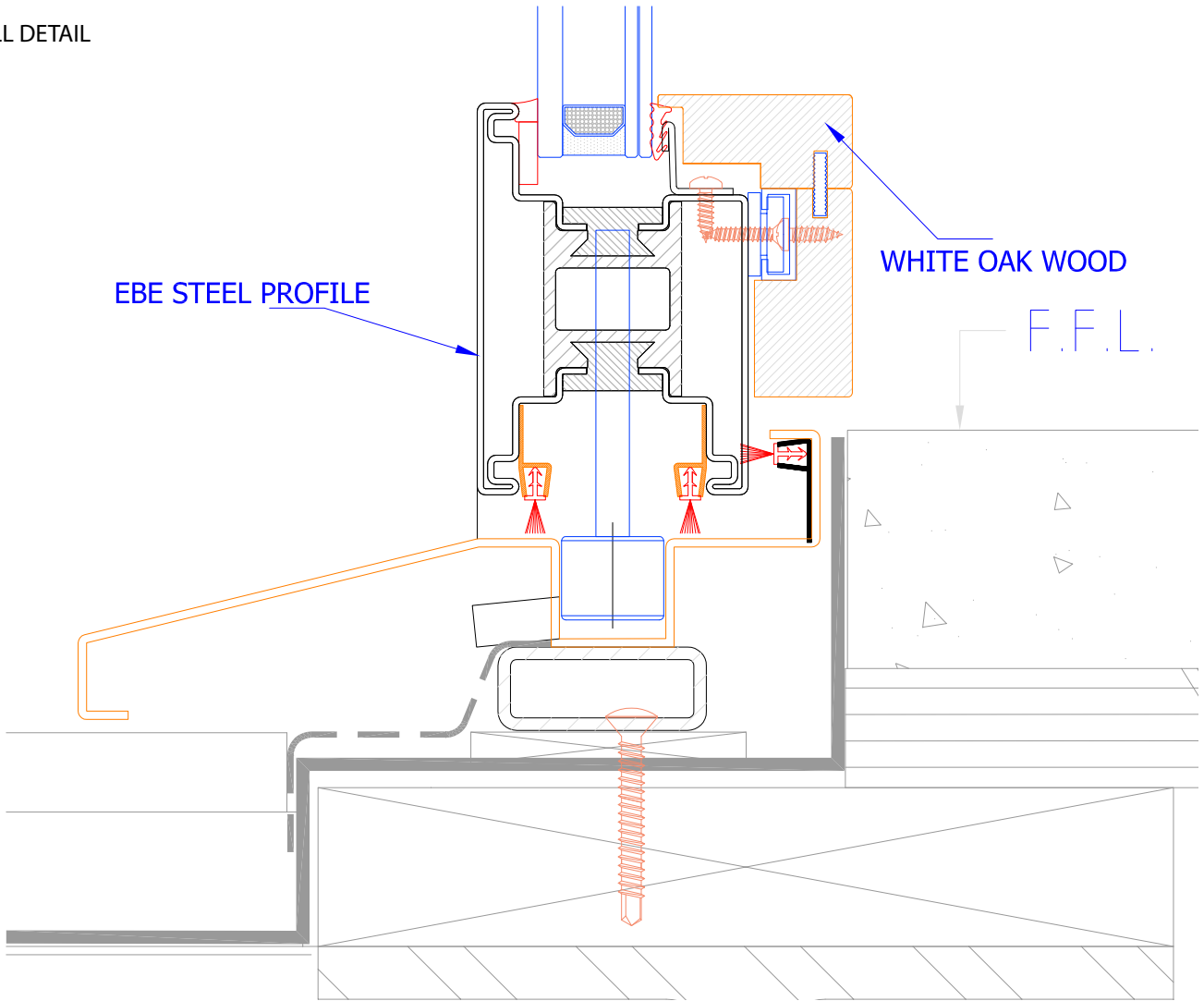
At first glance the (size of door) Bi-fold door appears as if it is floating freely. Surrounding the door on three sides is a U-shaped fixed glazing structure. This provides an elegant statement allowing the outdoors to frame this featured door system. The Bi-fold pivots at each panel and slides to the edges allowing maximum access to the landscape beyond.

The client received all of the benefits of the steel's narrow sight-lines and strength while adding warmth to the interior with the beautiful wood appliques. Just another example of Brombal versatility and our promise to the client, "Freedom to Create".

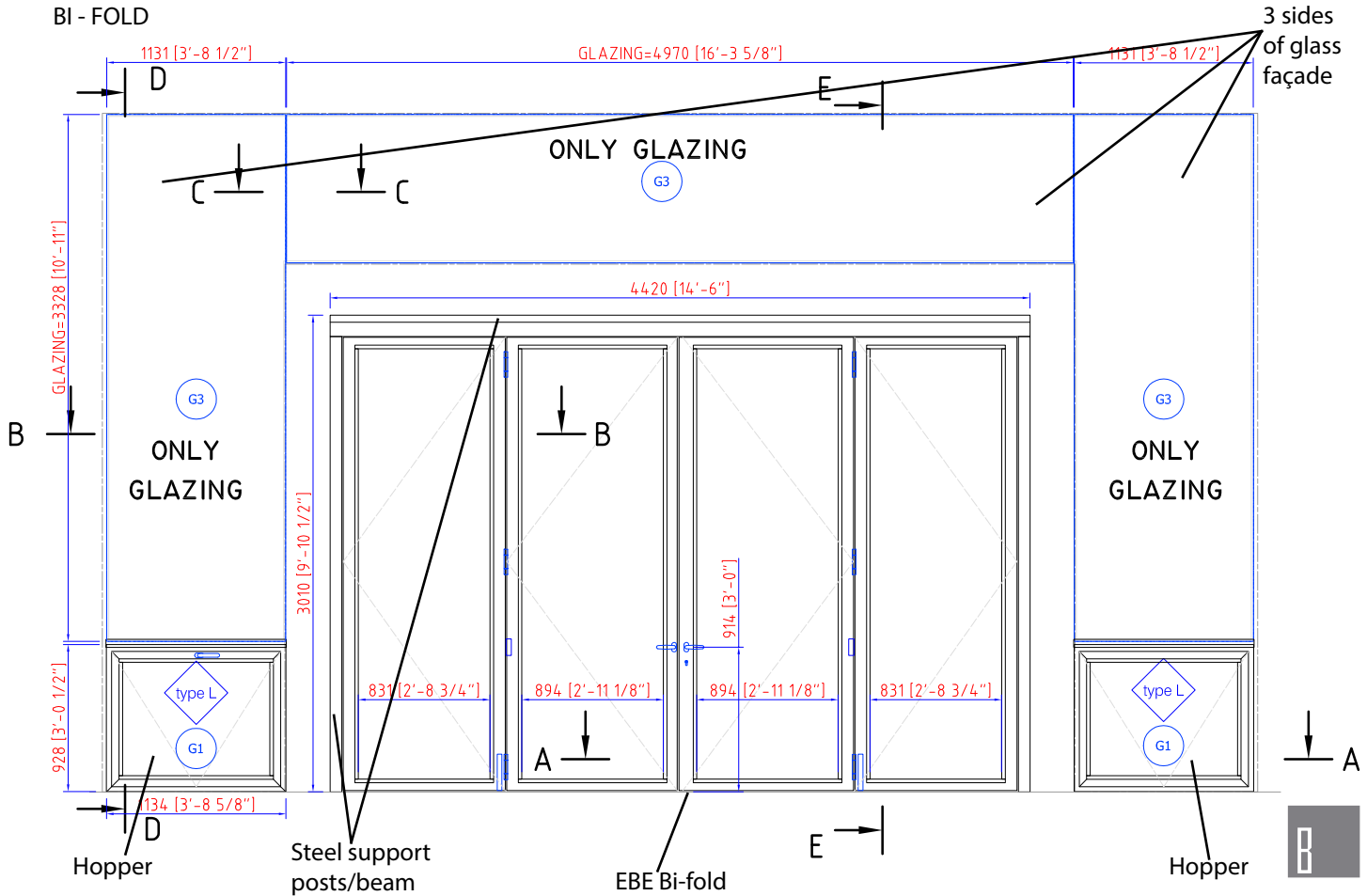
JAMB DETAIL



SILL DETAIL



BI - FOLD





T E S T I M O N I A L

"In order to capture the beautiful views offered from the site, it was most important to consider the right fenestration choices. We wanted to maximize the view, which meant having a minimal profile, yet the client wanted the warmth of wood. Cooritalia found the optimal choice, a Brombal steel window frame with wood cladding attached on the interior. Utilizing this metal/wood unit, Brombal was instrumental in developing the complex details for oversized windows and bi-folding door units, mullion-less corner glass, divided lights, integrated retractable screening, storefront glass walls and butt-joint glass units.

Brombal and their partner Cooritalia provided detailed shop drawings, oversaw the production, shipping of the units from Italy to the un-loading at the docks, and finally installation on-site. Their involvement and the use of metal wood units were invaluable to the success of this project."

LOUIE LEU ARCHITECT, Inc.

PROJECT TEAM

ARCHITECT

Louie Leu Architect, Inc.
236 North Santa Cruz Avenue, Suite 210
Los Gatos, CA 95030
phone: (408) 399-2222
www.louieleuarch.com

INTERIOR DESIGNER

Lorissa Kimm, AIA
2002 3rd Street, #106
San Francisco, CA 94107
phone: (415) 279-4995
www.lorissakimm.com

BUILDER

The Conrado Company, Inc.
14363 Saratoga Avenue, Suite 206
Saratoga, CA 95070
phone: (408) 867-2095
www.conrado.com

LANDSCAPE DESIGN

Jack Chandler Design
Artist/Landscape architect/Sculptor
P.O. Box 2654
Yountville, CA 94599
phone: (707) 486-5300
www.jackchandlerdesign.com

LIGHTING DESIGN

Hiram Banks Lighting Design
461 Second Street, #659
San Francisco CA 94107
phone: (415) 618-0855
www.hirambanks.com

STRUCTURAL ENGINEER

Hobach-Lewin Inc.
260 Sheridan Avenue, Suite 150
Palo Alto, CA 94306
phone: (650) 617-5930
www.hobach-lewin.com

DEALER

Cooritalia, Inc.
151 Vermont St, #10
San Francisco, CA, 94103
phone: (415) 339-5810
www.cooritalia.com

PHOTOGRAPHER

Frank Perez Architectural Photographer
2053 Grant Road, Suite 175
Los Altos, CA, 94094
phone: (408) 693-0006
www.frankpaulperez.com

BROMBAL

LUXURY METAL WINDOWS AND DOORS

BROMBAL Srl

Via Vallà 24 - Caselle di Altivole (TV) Italy
Phone: +39 0423 566189
www.brombal.it

BROMBAL USA

690 surf ave - Stratford, CT 06615
phone: +1 (203) 579 - 5136
www.brombalusa.com

BROMBAL OCEANIA Ltd

PO Box 47286 - Ponsonby
Auckland - New Zealand
phone: +64 22 1262814
www.brombaloceania.com

FOLLOW US ON:

